

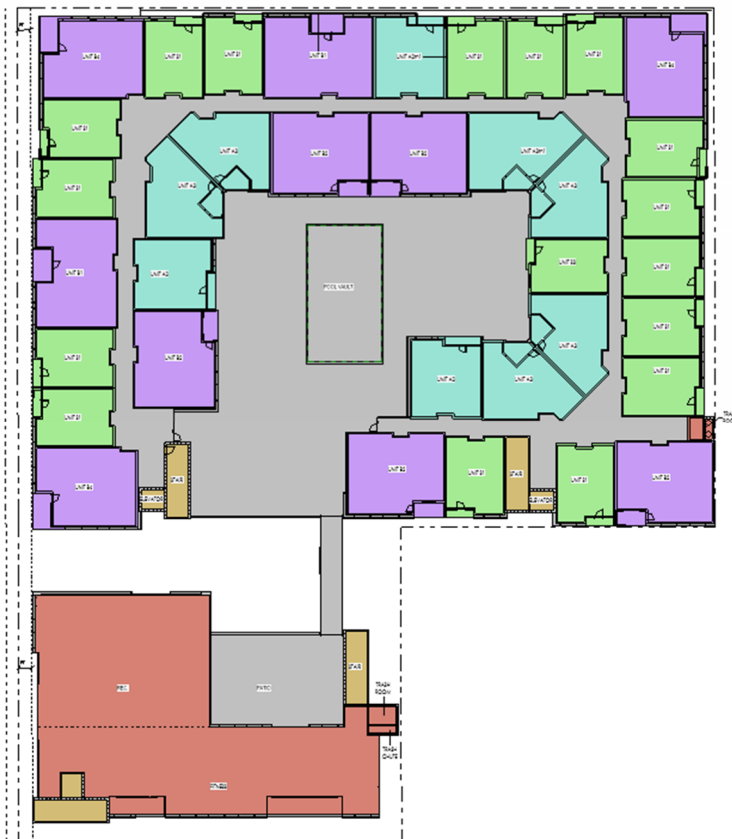


ORB REVIT SINGLE BUILDING STYLE PROJECT SET-UP

PODIUM, SINGLE BUILDING, AND WRAP STYLE PROJECTS

These will consist of one main building, in which unit types repeat through the floor plan. Typically, these buildings are of type VA or 3A construction, with a type IA construction parking garage attached to it. [Refer to ORB University for Chapters 5 & 6.](#)

For these projects the shell of the building will be divided into unit façade groups, which then will be placed in the building floor plan area to represent the skin of the project. Units will later be brought in as RVT_Unit Links to show the location of each unit type instance.





ORB REVIT SINGLE BUILDING STYLE PROJECT SET-UP

Initial Project Set up

Site layout will be dependent on the Revit Survey file. Once this file is linked, located and pinned down in the documentation file we can proceed to locate each unit type allocation.

Typical ORB projects will use our **temporary structures families** to provide the preliminary site layout and unit information. This will help provide information to clients that will allow us to modify and refine the site plan up to its final stage in a more expedited way. These will be used only through schematic design, and will later be replaced with rvt_links.

Typical single building projects will have units linked in directly. Worksets and templates are already set up for this in the project template files.

Whether Garden style, Podium, Wrap or any other type of project, **each and every single file in the project must be referenced to the same Keynote File assigned to the project.** The Keynote File is always located in the “BIM Files” folder under the _Keynotes folder.

Keynote files begin from the **ORB Master Keynote List** in Excel and transferred to a notepad file. Based on the client, you will need to adjust the keynote text column for specific items.

A	B	C	D	E	F	G
KEYNOTE NUMBER	KEYNOTE TEXT	KEYNOTE PAREN	ALLIANCE	TRINSIC	TITAN	MILL CREEK
ORB	ORB KEYNOTES					
	100 SITE NOTES	ORB				
	1000 PARKING		100			
	1001 TYPICAL PARKING STALL, 8.5' x 11'		1000			
	1002 ACCESSIBLE PARKING STALL, MIN. 11' x 18'		1000			
	VAN ACCESSIBLE PARKING STALL, MIN 11' x 18'. PROVIDE MIN. 8'-2" VERTICAL CLEARANCE		1000			
	1003 CLEARANCE		1000			
	1004 ACCESSIBLE AISLE		1000			
	1005 ACCESSIBLE CURB RAMP		1000			
	1006 ACCESSIBLE PATH OF TRAVEL - 2% MAX CROSS SLOPE		1000			
	1007 ACCESSIBLE SIGNAGE PER MUNICIPALITY		1000			

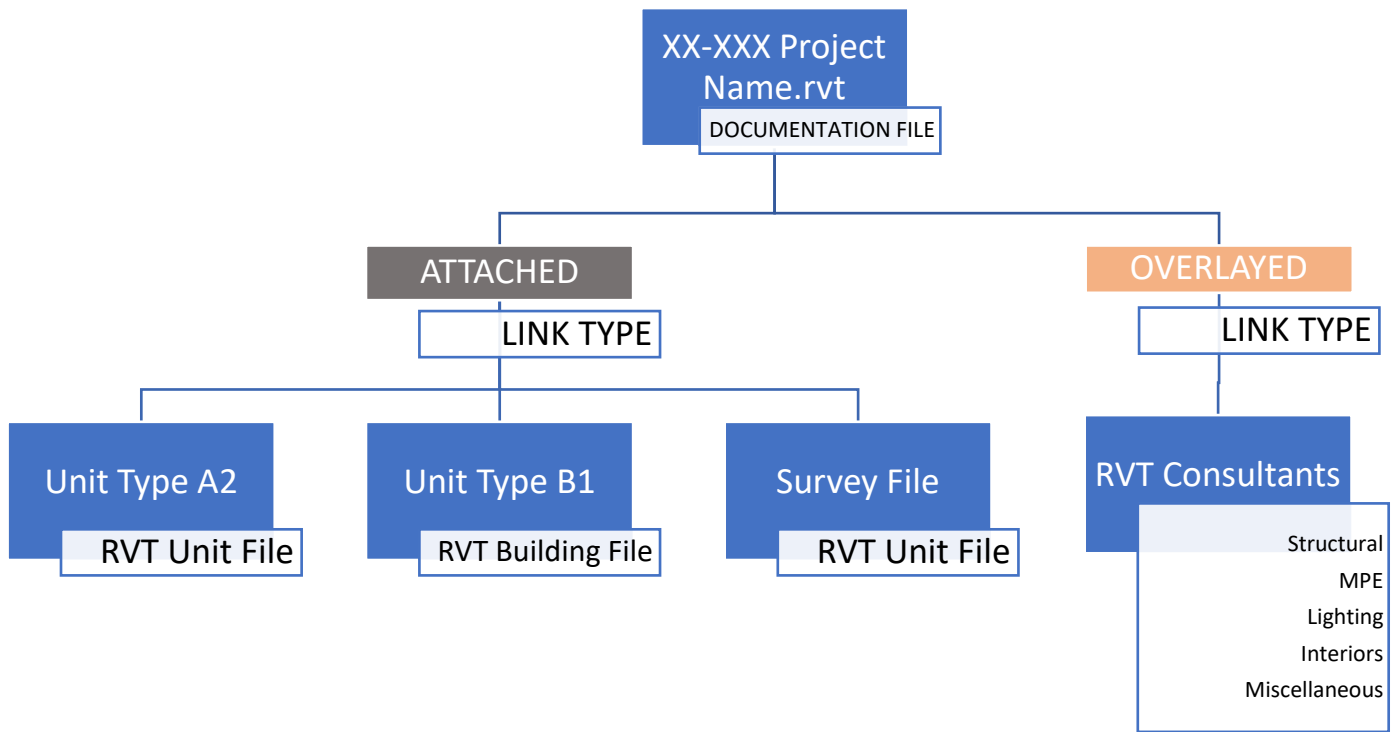


ORB REVIT SINGLE BUILDING STYLE PROJECT SET-UP

The Documentation File

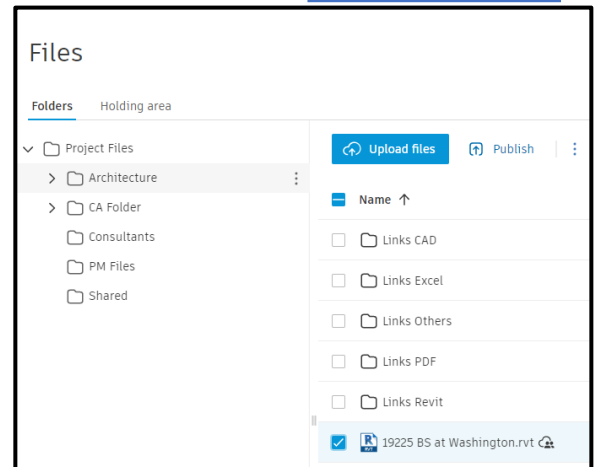
The Documentation file is the repository of all the project information. All the project files will be linked into the Documentation File.

LINKING SCHEMA



The documentation file is placed in the Architecture folder in the BUILD platform. This is where the construction documents reside for the project.

The documentation file is where all the information for the project is referenced and memorialized. The bulk of the project information will be extracted here from the elements directly placed in the file, as well as the linked elements. Sheets will be printed from here.





ORB REVIT SINGLE BUILDING STYLE PROJECT SET-UP

The typical documentation file will have the following:

1. All project files linked as attachments.
 - a. RVT Survey File
 - b. Unit Type Files
 - c. CAD backgrounds
2. **Architectural Site Plan consisting of all curb work in the “Site Work” workset and the Survey RVT file.**
3. **Unit Farm set to the “Unit Enlarged Plans” workset.**
4. All construction document sheets, floor plans, RCPs, Roof plans, Sections, Details, Assembly sheets, etc.
5. Life safety plans (Overall & Enlarged) for the main building and for the site. Noting for the building imaginary separation line distance between each building shown on the life safety site plan.
6. Final annotation elements:
 - a. Keynotes
 - b. Enlarged plan callouts
 - c. Building Section
 - d. Wall Section
 - e. Detail callouts
 - f. RVT Unit Tags, Floor Plan Wall Tags & Floor Plan Door tags, Floor Plan Window Tags, Floor plan Dimensions.

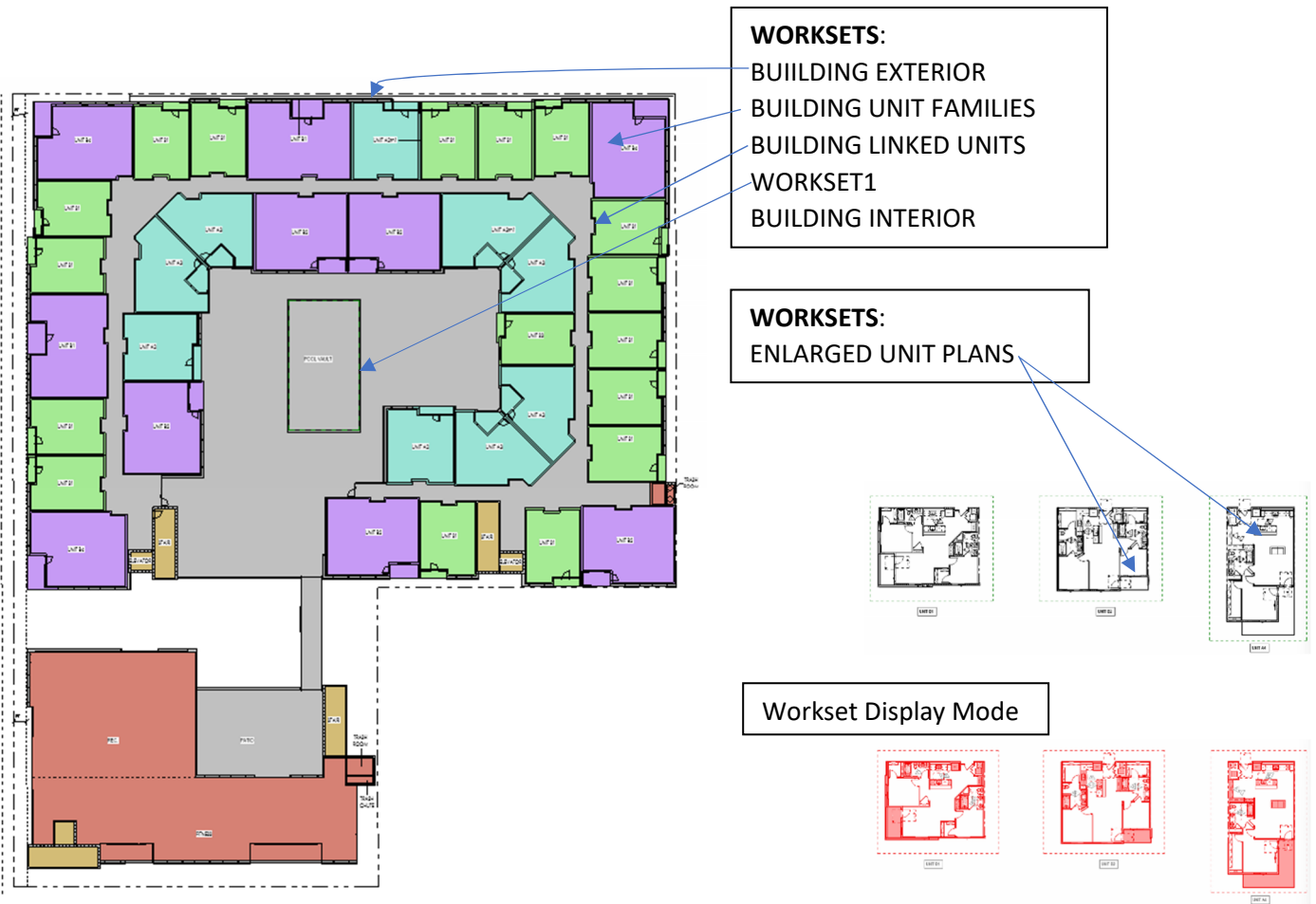


ORB REVIT SINGLE BUILDING STYLE PROJECT SET-UP

Unit Farm

The Unit farm takes place outside of the project floor plan area where it will not show up in any Floor plan for the main building views.

All Unit types must be presented in the unit farm with the corresponding Building Façade group for that unit type, and both elements will be placed in the Enlarged Unit Plans Workset.

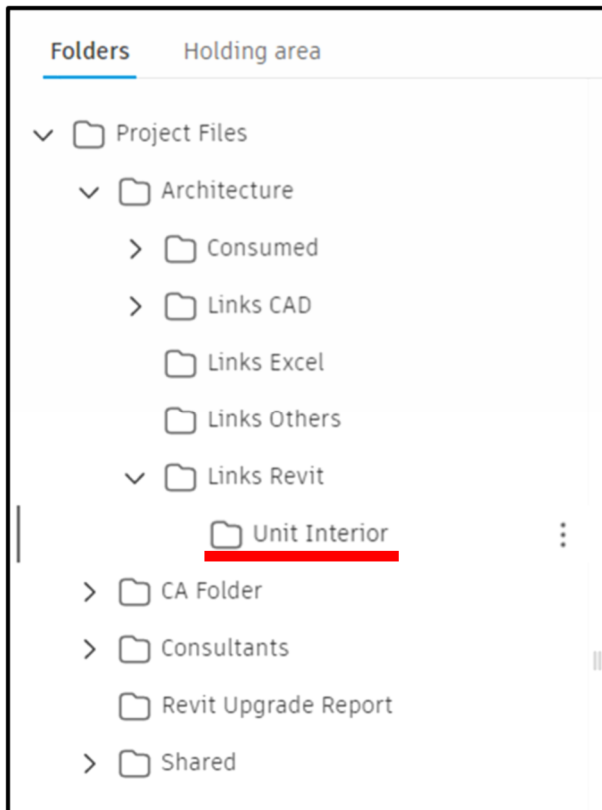




ORB REVIT SINGLE BUILDING STYLE PROJECT SET-UP

Unit Type Files

Unit type files are located inside the Unit Interior folder.



Unit type files need to follow the same naming convention as before:

Unit %.rvt

(Project Number) Unit (Type & Number).rvt

Unit Type files will always be independent. No files are to be linked inside of a unit type file.

All units will be linked to documentation file as an attachment and will be placed in the **unit farm as well as the building floor plan**. It is important to follow these guidelines so that pre-set schedules, view templates and worksets in the documentation file function correctly.



ORB REVIT SINGLE BUILDING STYLE PROJECT SET-UP

Unit Type Documentation:

1. Each unit type file will be developed up to 95% CD level throughout the project.
2. Views shall be created inside the unit file that will then be linked to the documentation file.
These files will have the following linked views:
 - a. **FLOOR PLAN – LINKED**
 - b. **FLOOR PLAN ANSI – LINKED**
 - c. **FLOOR PLAN DD – LINKED**
 - d. **INTERIOR ELEVATIONS (as needed)**
3. **NO keynotes placed in any of the previous views**
4. **Link to the project Keynote File located in the project folder.**

For further information on the requirements for each view, see the ORB manuals already established in HIVE.

The screenshot displays the HIVE CMS interface. The top navigation bar includes a search bar with the text 'unit' and a dropdown menu for 'Design app: Revit 2023 ([Home])'. Below the navigation bar, a list of PDF documents is shown, each with a blue PDF icon and a star rating. The documents listed are:

- A2.00 ANSI Unit Plans.pdf**: Libraries: ORB Standards and Manuals; Tags: TUTORIAL, UNIT; Reviews: 0; Loads: 23; Downloads: 0
- Enlarged Units - Unit Areas.pdf**: Libraries: ORB Standards and Manuals; Tags: --; Reviews: 0; Loads: 4; Downloads: 0
- Unit Links - Standard Worksets.pdf**: Libraries: ORB Standards and Manuals; Tags: --; Reviews: 0; Loads: 9; Downloads: 0
- Sheets - Unit Sheet Matrix.pdf**: Libraries: ORB Standards and Manuals; Tags: --; Reviews: 0; Loads: 21; Downloads: 0
- Unit Plans - How to Dimension.pdf**: Libraries: ORB Standards and Manuals; Tags: TUTORIAL; Reviews: 0; Loads: 9; Downloads: 0
- Unit Links - Tags and Schedules Basics.pdf**: Libraries: ORB Standards and Manuals; Tags: --; Reviews: 0; Loads: 39; Downloads: 0
- Linked Unit - Enlarged Plans Set-up.pdf**: Libraries: ORB Standards and Manuals; Tags: --; Reviews: 0; Loads: 18; Downloads: 0



ORB REVIT SINGLE BUILDING STYLE PROJECT SET-UP

Best Practices:

1. Use the ORB Dynamo scripts to create the required Floor Plans.
2. Provide scope boxes for each building Area with the correct nomenclature.
3. Provide scope boxes for at least one of each unit type in the Unit Farm.
4. Confer with your project manager and the project BIM manager to work out any particular characteristics or deviations in your project before the next document stage.